



AlpenParks

APARTMENT & FERIERESORT

REHRENBURG

VIEHHOFEN | SAALBACH

YOUR HOLIDAY APARTMENT BETWEEN SAALBACH & ZELL AM SEE

PRICE LIST 2024/25





FIRST CLASS RELAXATION

AlpenParks Apartment & Ferienresort Rehrenberg is ideally located between the Skicircus Saalbach Hinterglemm Leogang Fieberbrunn and the Schmittenhöhe Zell am See. The zellamseeXpress valley station is just a few steps from the resort and takes you directly to the Schmittenhöhe ski area in Zell am See.

Choose from spacious, fully equipped holiday apartments (45 to 105 m²) for two to ten people. Couples, families and friends will all feel right at home here. The resort has its own spa area, available to all guests. You will also find a ski school, ski rental, a sports shop and a practice slope right next to the holiday resort. The ALPI children's club with indoor play area completes the family programme.



EVERYTHING YOUR HEART DESIRES

Start the day with a delicious, rich breakfast buffet in the bistro and shop sunrise.

The breakfast buffet leaves nothing to be desired: look forward to crisp rolls, spreads, sausage and cheese specialities, hot and cold drinks and sweet treats.

FUN AND EXCITEMENT FOR THE WHOLE FAMILY

The AlpenParks resort always provides the best entertainment, regardless of the season or weather. There is a playground in the resort where kids can really let off steam. For the older ones, there is an outdoor climbing wall (accessible once a week with a supervisor as part of the children's programme). There's more entertainment in the Activity & Spa area, from the children's paddling pool to the heated outdoor swimming pool. There's also a games room with a variety of equipment, a selection of board games and books to borrow.



AN OASIS OF COMFORT

AlpenParks Apartment & Ferienresort Rehrenberg has its own spa area, available to all guests. Top amenities meet alpine charm, accompanied by marvellous views of the imposing mountains of the province of Salzburg. The spa area offers the following facilities, ideal for a relaxing family holiday:

- Organic sauna
- Sauna
- Relaxation room
- Heated outdoor swimming pool
- Whirlpool
- Children's paddling pool

IN THE HEART OF THE SUMMER PARADISE



VIEHHOFEN SUMMER CARD

- Unlimited free use of the mobility card
- Unlimited and free use of the Schmittenhöhe summer cable cars
- 1 x free panoramic boat trip on the MS Schmittenhöhe
- Unlimited free use of the public beaches and more



- **Hiking:** Numerous hiking and summit tours for families, hikers and real mountain enthusiasts
- **Cycling and mountain biking:** Whether you're a beginner or a pro, there are numerous opportunities to pedal around the region
- **Climbing:** Europe's largest high-rope climbing park in Hinterglemm with 200 stations and 30 rope slides
- **Swimming fun:** Käpt'n Hook adventure public pool and the bathing beaches of Lake Zell
- **Water sports:** Stand-up paddling, diving, surfing, boating, kayaking, canyoning, pedal boating, boat trips on Lake Zell
- **Horse riding:** Lessons, horse-drawn carriage rides
- **Golf:** Golf Club Zell am See-Kaprun boasts 36 holes with the Schmittenhöhe and Kitzsteinhorn links. You can reach other gorgeous golf facilities in around 30 minutes
- **Trail running:** Speed trails, marathon trails and endurance trails can be found in and around Saalbach Hinterglemm
- **Ball sports:** Tennis, beach volleyball and much more
- **Excursion destinations:** High mountain reservoirs Kaprun, Ferleiten Wildlife Park, Grossglockner High Alpine Road, Krimml Waterfalls, World of Ice Giants Werfen, cultural city of Salzburg and much more
- **TAUERN SPA Kaprun:** Thermal spa with sauna & bathing world spread over 20,000 m²
- **Viehhofen Summer Card:** Many attractions included

IN THE HEART OF THE WINTER PARADISE



- **Skiing and snowboarding:** Ski ALPIN CARD = 1 ticket = 3 regions. The Ski Alpin Card offers a total of 408 kilometres of slopes and 121 lifts in 3 premium ski areas
- **Ski school:** Ski school, ski rental, sports shop and practice area right at reception
- **Tobogganing:** Numerous natural toboggan runs in the region – a tobogganing experience for the whole family
- **Snowshoe hiking:** Discover the beautiful tributary valleys and let our mountain hiking guides show you some very special places
- **Cross-country skiing:** High altitude trail in the valley end in Hinterglemm, 107 km of cross-country ski runs in Zell am See-Kaprun
- **Hut fun:** Numerous ski huts with local specialities, après-ski on the mountain and right in the village centres
- **Winter hiking and horse-drawn sleigh rides:** What could be nicer than taking a horse-drawn carriage ride with your loved one or family to the valley end?
- **Ice skating:** Ice sports on the ice rink at the Hinterglemm sports centre, on frozen Lake Zell or in the Zell am See indoor ice rink
- **TAUERN SPA Kaprun:** Thermal spa with sauna and swimming world spread over 20,000 m²

*** LIVING COMFORT REHRENBURG I



APARTMENT ALPINE 45 M² | 2 TO 4 PERSONS

- Standard occupancy: 2 persons
- 1 bedroom (double bed)
- 1 bathroom with bathtub or shower
- Open-plan living, kitchen & dining area
- Vestibule with wardrobe
- Smart TV
- Terrace or balcony
- Fireplace
- Unheated ski room

PRICES PER APARTMENT AND NIGHT

WINTER

03.11.–21.12.2024 22.03.–26.04.2025	from € 111
05.01.–18.01.2025 15.03.–22.03.2025	from € 178
18.01.–01.02.2025 08.03.–15.03.2025	from € 231
21.12.–26.12.2024 01.02.–22.02.2025 01.03.–08.03.2025	from € 314
26.12.2024–05.01.2025 22.02.–01.03.2025	from € 359

SUMMER

28.04.–10.05.2025	from € 103
10.05.–06.07.2025 13.09.–02.11.2025	from € 144
24.05.–06.07.2025 23.08.–13.09.2025	from € 189
06.07.–23.08.2025	from € 222

One-off mandatory final cleaning: € 90



APARTMENT CLASSIC 60 M² | 4 TO 6 PERSONS

- Standard occupancy: 4 persons
- 2 bedrooms (1x double bed, 2x single bed)
- 1 bathroom with bathtub or shower
- Separate WC in some apartments
- Open-plan living, kitchen & dining area
- Vestibule with wardrobe
- Smart TV
- Balcony
- Fireplace
- Unheated ski room

PRICES PER APARTMENT AND NIGHT

WINTER

03.11.–21.12.2024 22.03.–26.04.2025	from € 158
05.01.–18.01.2025 15.03.–22.03.2025	from € 224
18.01.–01.02.2025 08.03.–15.03.2025	from € 294
21.12.–26.12.2024 01.02.–22.02.2025 01.03.–08.03.2025	from € 404
26.12.2024–05.01.2025 22.02.–01.03.2025	from € 454

SUMMER

28.04.–10.05.2025	from € 143
10.05.–06.07.2025 13.09.–02.11.2025	from € 190
24.05.–06.07.2025 23.08.–13.09.2025	from € 234
06.07.–23.08.2025	from € 274

One-off mandatory final cleaning: € 110



APARTMENT COMFORT 65 M² | 4 TO 6 PERSONS

- Standard occupancy: 4 persons
- 2 bedrooms (1x double bed, 2x single bed)
- In the main building
- 1 bathroom with shower and double washbasin
- Separate WC
- Open-plan living, kitchen & dining area
- Vestibule with wardrobe
- Smart TV
- Balcony
- Fireplace
- Unheated ski room

PRICES PER APARTMENT AND NIGHT

WINTER

03.11.–21.12.2024 22.03.–26.04.2025	from € 188
05.01.–18.01.2025 15.03.–22.03.2025	from € 254
18.01.–01.02.2025 08.03.–15.03.2025	from € 334
21.12.–26.12.2024 01.02.–22.02.2025 01.03.–08.03.2025	from € 461
26.12.2024–05.01.2025 22.02.–01.03.2025	from € 529

SUMMER

28.04.–10.05.2025	from € 164
10.05.–06.07.2025 13.09.–02.11.2025	from € 212
24.05.–06.07.2025 23.08.–13.09.2025	from € 291
06.07.–23.08.2025	from € 329

One-off mandatory final cleaning: € 110



APARTMENT DREAMS 85 M² | 6 TO 8 PERSONS

- Standard occupancy: 6 persons
- 3 bedrooms (2x double bed, 2x single bed)
- 1 to 2 bathrooms with shower or bathtub
- Open-plan living, kitchen & dining area
- Vestibule with wardrobe
- Smart TV
- Balcony
- Fireplace
- Unheated ski room

PRICES PER APARTMENT AND NIGHT

WINTER

03.11.–21.12.2024 22.03.–26.04.2025	from € 299
05.01.–18.01.2025 15.03.–22.03.2025	from € 414
18.01.–01.02.2025 08.03.–15.03.2025	from € 471
21.12.–26.12.2024 01.02.–22.02.2025 01.03.–08.03.2025	from € 628
26.12.2024–05.01.2025 22.02.–01.03.2025	from € 719

SUMMER

28.04.–10.05.2025	from € 197
10.05.–06.07.2025 13.09.–02.11.2025	from € 258
24.05.–06.07.2025 23.08.–13.09.2025	from € 346
06.07.–23.08.2025	from € 393

One-off mandatory final cleaning: € 150



APARTMENT DREAMS PLUS 100 M² | 6 TO 8 PERSONS

- Standard occupancy: 6 persons
- 3 bedrooms (2x double bed, 2x single bed)
- In the main building
- 2 bathrooms with showers
- Separate WC
- Open-plan living, kitchen & dining area
- Vestibule with wardrobe
- Smart TV
- Balcony
- Fireplace
- Unheated ski room

PRICES PER APARTMENT AND NIGHT

WINTER

03.11.–21.12.2024 22.03.–26.04.2025	from € 398
05.01.–18.01.2025 15.03.–22.03.2025	from € 474
18.01.–01.02.2025 08.03.–15.03.2025	from € 524
21.12.–26.12.2024 01.02.–22.02.2025 01.03.–08.03.2025	from € 688
26.12.2024–05.01.2025 22.02.–01.03.2025	from € 774

SUMMER

28.04.–10.05.2025	from € 219
10.05.–06.07.2025 13.09.–02.11.2025	from € 280
24.05.–06.07.2025 23.08.–13.09.2025	from € 367
06.07.–23.08.2025	from € 429

One-off mandatory final cleaning: € 150



APARTMENT WELLFEEL 105 M² | 8 TO 10 PERSONS

- Standard occupancy: 8 persons
- 4 bedrooms (2x double bed, 4x single bed)
- 2 bathrooms with showers and a double washbasin
- Separate WC
- Open-plan living, kitchen & dining area
- Vestibule with wardrobe
- Smart TV
- Balcony
- Fireplace
- Unheated ski room

PRICES PER APARTMENT AND NIGHT

WINTER

03.11.–21.12.2024 22.03.–26.04.2025	from € 438
05.01.–18.01.2025 15.03.–22.03.2025	from € 524
18.01.–01.02.2025 08.03.–15.03.2025	from € 634
21.12.–26.12.2024 01.02.–22.02.2025 01.03.–08.03.2025	from € 868
26.12.2024–05.01.2025 22.02.–01.03.2025	from € 954

SUMMER

28.04.–10.05.2025	from € 252
10.05.–06.07.2025 13.09.–02.11.2025	from € 326
24.05.–06.07.2025 23.08.–13.09.2025	from € 434
06.07.–23.08.2025	from € 492

One-off mandatory final cleaning: € 170

**** LIVING COMFORT
PREMIUM REHRENBERG²



**INCLUDED SERVICES
 ONLY AT PREMIUM
 REHRENBERG²**

- In-house sauna area
- Lift in the building
- Car park at the resort
- Heated ski room with ski boot dryer



**APARTMENT SUPERIOR
 80 M² | 4 TO 6 PERSONS**

- Standard occupancy: 4 persons
- 2 bedrooms (double beds)
- 2 bathrooms with shower
- Separate WC
- Open-plan living, kitchen & dining area
- Vestibule with wardrobe
- Smart TV
- AlpenParks premium equipment
- Terrace or balcony
- Ski room with ski boot dryer

PRICES PER APARTMENT AND NIGHT

WINTER	
03.11.–21.12.2024	from € 265
22.03.–26.04.2025	
05.01.–18.01.2025	from € 315
15.03.–22.03.2025	
18.01.–01.02.2025	from € 410
08.03.–15.03.2025	
21.12.–26.12.2024	from € 505
01.02.–22.02.2025	
01.03.–08.03.2025	
26.12.2024 – 05.01.2025	from € 598
22.02.–01.03.2025	
SUMMER	
28.04.–10.05.2025	from € 187
10.05.–06.07.2025	from € 234
13.09.–02.11.2025	
24.05.–06.07.2025	from € 278
23.08.–13.09.2025	
06.07.–23.08.2025	from € 323

One-off mandatory final cleaning: € 110



**APARTMENT LUXURY
 80 M² | 4 TO 6 PERSONS**

- Standard occupancy: 4 persons
- 2 bedrooms (double beds)
- 2 bathrooms with shower
- Separate WC
- Open-plan living, kitchen & dining area
- Vestibule with wardrobe
- Smart TV
- AlpenParks premium equipment
- Terrace or balcony

PRICES PER APARTMENT AND NIGHT

WINTER	
03.11.–21.12.2024	from € 305
22.03.–26.04.2025	
05.01.–18.01.2025	from € 357
15.03.–22.03.2025	
18.01.–01.02.2025	from € 451
08.03.–15.03.2025	
21.12.–26.12.2024	from € 545
01.02.–22.02.2025	
01.03.–08.03.2025	
26.12.2024 – 05.01.2025	from € 640
22.02.–01.03.2025	
SUMMER	
28.04.–10.05.2025	from € 208
10.05.–06.07.2025	from € 256
13.09.–02.11.2025	
24.05.–06.07.2025	from € 312
23.08.–13.09.2025	
06.07.–23.08.2025	from € 356

One-off mandatory final cleaning: € 120



**APARTMENT DELUXE
 120 M² | 6 TO 8 PERSONS**

- Standard occupancy: 6 persons
- 3 bedrooms (double beds)
- 3 bathrooms with shower
- Open-plan living, kitchen & dining area
- Vestibule with wardrobe
- Smart TV
- AlpenParks premium equipment
- Terrace or balcony

Penthouse Deluxe with sauna on request and depending on availability

PRICES PER APARTMENT AND NIGHT

WINTER	
03.11.–21.12.2024	from € 458
22.03.–26.04.2025	
05.01.–18.01.2025	from € 544
15.03.–22.03.2025	
18.01.–01.02.2025	from € 614
08.03.–15.03.2025	
21.12.–26.12.2024	from € 785
01.02.–22.02.2025	
01.03.–08.03.2025	
26.12.2024 – 05.01.2025	from € 885
22.02.–01.03.2025	
SUMMER	
28.04.–10.05.2025	from € 263
10.05.–06.07.2025	from € 324
13.09.–02.11.2025	
24.05.–06.07.2025	from € 386
23.08.–13.09.2025	
06.07.–23.08.2025	from € 449

One-off mandatory final cleaning: € 170



**APARTMENT ROYAL
 150 M² | 8 PERSONS**

- Standard occupancy: 8 persons
- 4 bedrooms (double beds)
- 4 bathrooms with shower
- Open-plan living, kitchen & dining area
- Vestibule with wardrobe
- Smart TV
- AlpenParks premium equipment
- Terrace or balcony
- Private sauna

PRICES PER APARTMENT AND NIGHT

WINTER	
03.11.–21.12.2024	from € 470
22.03.–26.04.2025	
05.01.–18.01.2025	from € 625
15.03.–22.03.2025	
18.01.–01.02.2025	from € 694
08.03.–15.03.2025	
21.12.–26.12.2024	from € 950
01.02.–22.02.2025	
01.03.–08.03.2025	
26.12.2024 – 05.01.2025	from € 1,048
22.02.–01.03.2025	
SUMMER	
28.04.–10.05.2025	from € 427
10.05.–06.07.2025	from € 499
13.09.–02.11.2025	
24.05.–06.07.2025	from € 588
23.08.–13.09.2025	
06.07.–23.08.2025	from € 641

One-off mandatory final cleaning: € 190

APARTMENTS IN VIEHHOFEN FOR MAGICAL MOMENTS

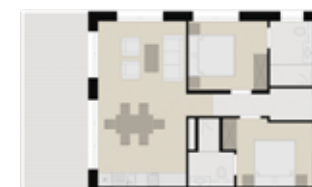
STEVE LODGE

The five new first-class holiday apartments of the Steve Lodge promise to enchant you amidst the magnificent nature.

The apartments are located just above the centre of Viehhofen in a beautiful, sunny hillside location. The magnificent views of the surrounding region can be savoured on the terraces. The village centre, cable car and a mini-supermarket are just a 10-minute walk away. The ski bus stops 400 metres from the apartments.



- Apartments for 4 to 10 people
- Ski storage room with ski boot dryer
- Washing machine and tumble dryer
- Partially covered car park



LUXURY PENTHOUSE 64 M² | 4 TO 6 PERSONS

- Standard occupancy: 4 persons
- 2 bedrooms (double bed)
- 2 bathrooms with shower
- Open-plan living, kitchen & dining area
- Vestibule with wardrobe
- Smart TV
- AlpenParks premium equipment
- Balcony



PREMIUM SPA 92 M² | 6 TO 8 PERSONS

- Standard occupancy: 6 persons
- 3 bedrooms (double bed)
- 3 bathrooms with shower
- Open-plan living, kitchen & dining area
- Vestibule with wardrobe
- Smart TV
- AlpenParks premium equipment
- Terrace
- Private sauna



ROYAL SPA 240 M² | 8 TO 10 PERSONS

- Standard occupancy: 8 persons
- 3 bedrooms (double bed)
- 1 bedroom (double bed and bunk bed)
- 4 bathrooms with shower and/or bathtub
- Open-plan living, kitchen & dining area
- Vestibule with wardrobe
- Smart TV
- AlpenParks premium equipment
- Terraces
- Private sauna

PRICES PER APARTMENT AND NIGHT

WINTER

03.11.–21.12.2024	from € 265
22.03.–26.04.2025	
05.01.–18.01.2025	from € 315
15.03.–22.03.2025	
18.01.–01.02.2025	from € 410
08.03.–15.03.2025	
21.12.–26.12.2024	from € 541
01.02.–22.02.2025	
01.03.–08.03.2025	
26.12.2024–05.01.2025	from € 657
22.02.–01.03.2025	

SUMMER

28.04.–10.05.2025	from € 218
10.05.–06.07.2025	from € 267
13.09.–02.11.2025	
24.05.–06.07.2025	from € 322
23.08.–13.09.2025	
06.07.–23.08.2025	from € 374

One-off mandatory final cleaning: € 120

PRICES PER APARTMENT AND NIGHT

WINTER

03.11.–21.12.2024	from € 430
22.03.–26.04.2025	
05.01.–18.01.2025	from € 475
15.03.–22.03.2025	
18.01.–01.02.2025	from € 580
08.03.–15.03.2025	
21.12.–26.12.2024	from € 733
01.02.–22.02.2025	
01.03.–08.03.2025	
26.12.2024–05.01.2025	from € 844
22.02.–01.03.2025	

SUMMER

28.04.–10.05.2025	from € 280
10.05.–06.07.2025	from € 341
13.09.–02.11.2025	
24.05.–06.07.2025	from € 397
23.08.–13.09.2025	
06.07.–23.08.2025	from € 449

One-off mandatory final cleaning: € 170

PRICES PER APARTMENT AND NIGHT

WINTER

03.11.–21.12.2024	from € 475
22.03.–26.04.2025	
05.01.–18.01.2025	from € 625
15.03.–22.03.2025	
18.01.–01.02.2025	from € 694
08.03.–15.03.2025	
21.12.–26.12.2024	from € 969
01.02.–22.02.2025	
01.03.–08.03.2025	
26.12.2024–05.01.2025	from € 1,099
22.02.–01.03.2025	

SUMMER

28.04.–10.05.2025	from € 426
10.05.–06.07.2025	from € 499
13.09.–02.11.2025	
24.05.–06.07.2025	from € 588
23.08.–13.09.2025	
06.07.–23.08.2025	from € 641

One-off mandatory final cleaning: € 190

INFORMATION ABOUT THE APARTMENTS

All unit prices are listed per apartment and night for the specified standard occupancy depending on the category. Final cleaning, local tax and tourist fee will be charged additionally. Local tax: Per person and day € 1.70 (from age 15). Tourist fee € 0.05 per person and day (from age 15).

INCLUDED APARTMENT SERVICES

- Bed linen and towels in the apartment (initial supply)
- Kitchen pack with washing-up liquid, kitchen roll, filter, tea towel, dishwasher tabs, Nespresso coffee machine (without capsules)
- Free Wi-Fi
- 1 parking space per apartment

ADDITIONAL BEDS

- Highchair and baby cot up to 2 years: One-off fee of € 10 per stay (on request)

CHANGE OF LAUNDRY

- Change of linen and intermediate cleaning, once free of charge from 8 nights
- Additional change of towels and bath towels: € 7.50 per set
- Additional bed linen/change of linen: € 7.50 per set

CLEANING – FINAL CLEANING

- Apartment Alpine € 90
- Apartment Classic, Comfort, Superior, Luxury: € 110
- Apartment Dreams, Dreams Plus: € 150
- Apartment Wellfeel: € 170
- Apartment Premium: € 170
- Apartment Royal, Apartment Royal Spa: € 190

INTERMEDIARY CLEANING ON REQUEST

- Apartment Alpine: € 35
- Apartment Classic, Comfort: € 55
- Apartment Dreams, Dreams Plus: € 75
- Apartment Wellfeel: € 105

RICH BREAKFAST BUFFET PER PERSON AND NIGHT

- Adults: € 18
- Children ages 4 to 14 years: € 8
- Children up to age 4: Free of charge

YOUR DOG

€ 25 per night, without food (only with pre-booking)



TERMS & CONDITIONS FOR APARTMENTS

ARRIVAL

The apartments will be ready for you from 4 pm on the day of arrival.

DEPARTURE

We kindly ask that you vacate the apartment by 10 am. If you still want to use the day, please let us know. We will be happy to store your luggage temporarily at reception.

DEPOSIT / BILLING / RESERVATION

The reservation is binding upon receipt of your deposit according to the reservation letter. You are welcome to pay your bill on site in cash, by Visa or Mastercard, or by EC card.

BANK DETAILS

AlpenParks Ferienresort Rehrenberg GmbH
IBAN AT13 2040 4000 4298 8865, BIC SBGSAT2SXXX
All transfers are free of charge for the recipient.

SECURITY DEPOSIT

We charge a security deposit of € 300/apartment on arrival, which will be returned at the end of your stay after an inspection of the premises.

CANCELLATION

- Up to 3 months before arrival: free of charge
- Up to 1 month before arrival: 40%
- Up to 1 week before arrival: 70%
- In the week before the day of arrival: 90%
- In case of no-show: 100%

TRAVEL INSURANCE

Hotel Cancellation Plus – we recommend taking this out when you make your reservation. We will be happy to advise you.

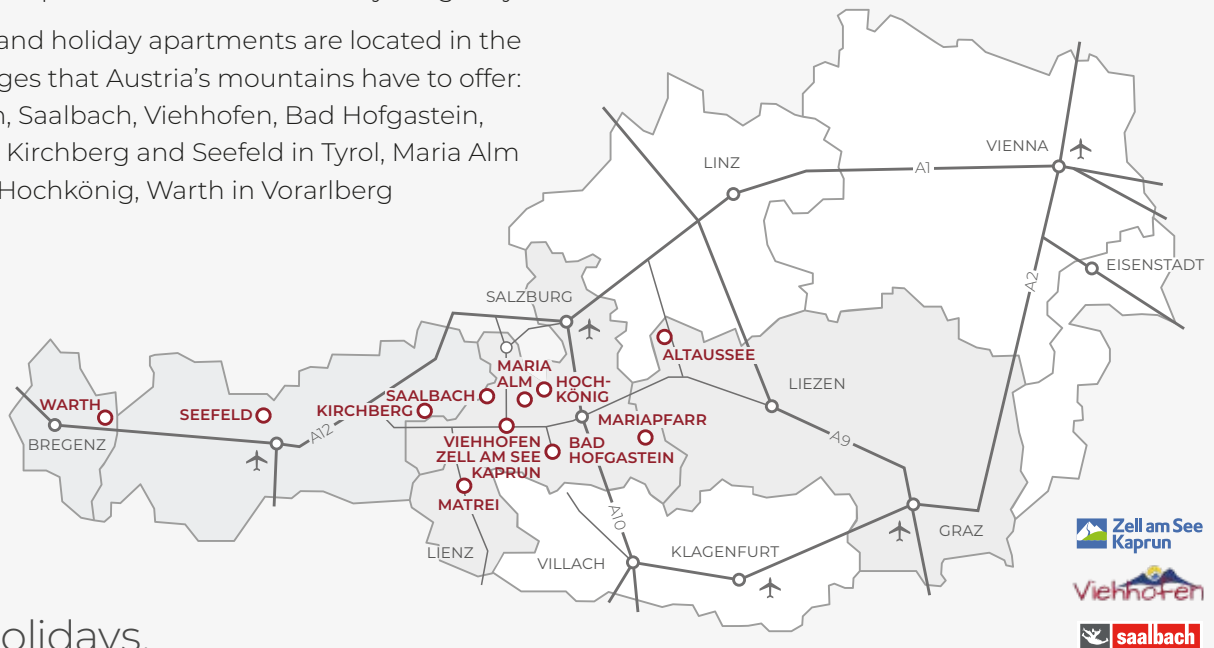
MISCELLANEOUS

Floor plans and sketches are examples. They may vary depending on the apartment, but do not affect the price. Misprints and errors may occur despite careful checking. This price list supersedes all previous price lists. The provisions of the Austrian Hotel Regulations apply. (www.hotelverband.at)

ALPENPARKS MEANS HOLIDAYS IN THE MOST BEAUTIFUL PLACES IN AUSTRIA

Why wander far and wide when you can start your day in the mountains straight from AlpenParks Hotels & Residences? There are several reasons why you should choose one of our accommodations for your next holiday. All our hotels, apartments and holiday homes are centrally located or idyllically quiet. But they're also always in the immediate vicinity of ski lifts or right on the ski slopes, so you can leave your car behind while on holiday. In summer, they make for the perfect starting point for extensive hikes or panoramic mountain bike tours. Spa lovers will also find everything they could wish for.

The chalets, hotels and holiday apartments are located in the most beautiful villages that Austria's mountains have to offer: Zell am See-Kaprun, Saalbach, Viehhofen, Bad Hofgastein, Matriei in East Tyrol, Kirchberg and Seefeld in Tyrol, Maria Alm and Mühlbach am Hochkönig, Warth in Vorarlberg and Altaussee.



my alpine holidays.

AlpenParks Apartment & Ferienresort Rehrenberg Viehhofen

Glemmerstraße 260 | 5752 Viehhofen | Austria

+43 6542 80777 | rehrenberg@alpenparks.at

alpenparks.at/rehrenberg

alpenparks.at/stevlodger



MORE ALPENPARKS RESORTS